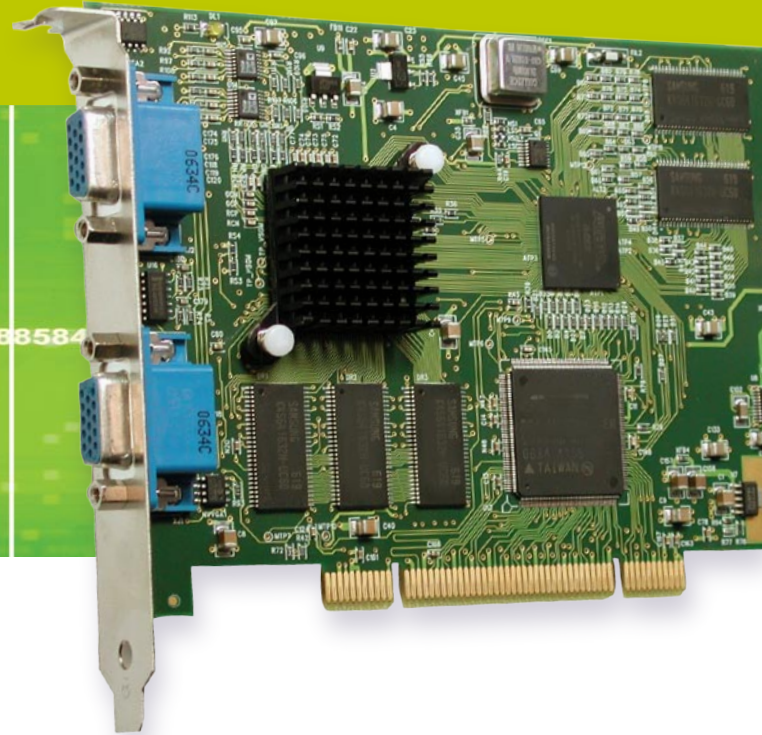


UFG-03 DualRGB

frame grabber with two RGB inputs



Two Selectable RGB Inputs

UFG-03 DualRGB frame grabber enables the capture, printing and transmission of the screen of any PC or other equipment. Tools often available in a standard PC can be used to store the video as single images or video streams. The card features a built-in switch for selecting between the two input RGB signals. Application areas for the UFG-03 DualRGB can be found in industrial, medical, multimedia or in maritime environment.

Compatible with Standard Windows Applications

UFG-03 DualRGB can be used with a wide selection of video capturing and streaming tools that are using DirectShow. The application will automatically recognize UFG-03 DualRGB and use the built-in configuration tool.

For areas where a custom application is necessary the UFG-03 Extended Driver Interface provides a direct access to all functions and parameters of the card. A SDK with example applications and example source code is available.

Automatic Video Signal Detection

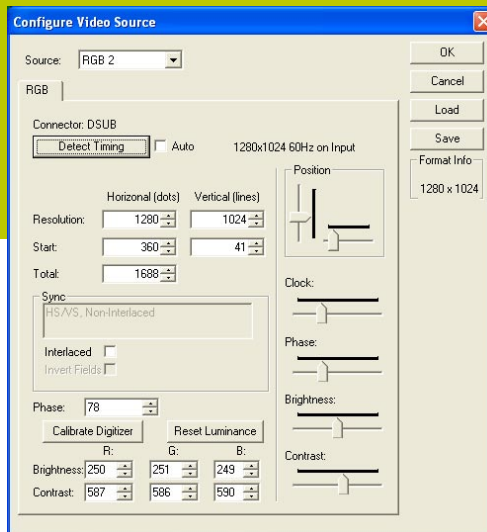
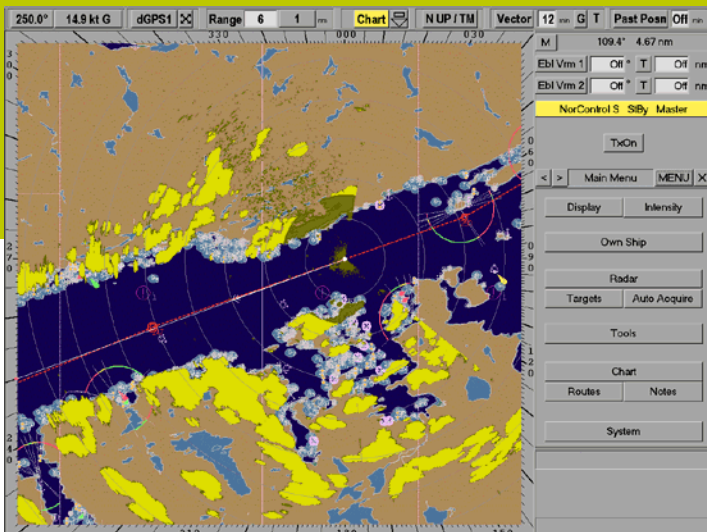
UFG-03 DualRGB automatically detects all standard VESA display modes. In addition to that, it can be used with sync modes from CSync to Sync on Green.

Benefits

- Capture of images and streams from two selectable RGB inputs
- Video for Windows compatible
- Compact half size PCI card
- Compatible with PCI and PCI-X
- Built-in display mode and sync detection
- PCI bus data transfer speed up to 133 MBytes/s
- Image captured in one video frame
- HW scaling down to half input image size and up to 1600 x 1200

UFG-03 DualRGB

frame grabber with two RGB inputs



LEFT **UFG-03 image clarity and stability meets the highest industry requirements.**
 RIGHT **The configuration tool enables interactive fine-tuning of the capturing parameters.**

Specifications

Video Inputs	RGB on two VGA connectors	
	<u>UFG-03 DualS</u>	<u>UFG-03 DualHD</u>
Input Resolution	1280 x 1024	2048 x 1536*
	*) Maximum bitmap size 1600 x 1200 pix	
Input Frame Rate		
1600 x 1200	n/a	60 Hz
1280 x 1024	60 Hz	85 Hz
1024 x 768	85 Hz	85 Hz
Input Pixel Frequency	110 MHz	165 MHz
A/D Conversion	8 bits per color	
Scan Modes	Progressive, interlaced	
Sync Modes	Automatically detected RGBHV, RGSB, RGBC	
HW Scaling	From half of input image size to 1600 x 1200, independently horizontal and vertical	
Output Color Depth	16, 24 or 32 bits per pixel	
Data Interface	PCI bus master; bursts up to 133 MBytes/s. Compatible with both 5 V and 3.3 V bus logic voltages	
Operating Systems	Windows XP or 2000	
SW Interface	Video for Windows compatible with Installable Driver functions Input channel selected via user interface or SW	
Multi-board Support	Up to 10 boards in a system	
Module Size	Half size PCI card, Length 175 mm	
Power Consumption	6.3 W maximum	

Applications

Video Image Capture

You can use UFG Frame Grabbers to store an electronic copy of an image from a medical, industrial, laboratory etc. Instrument's screen. Your need might as well be to backup real time information from an automation system or e.g. a radar display.

Video Streaming

UFG Frame Grabbers can store your video into a video stream file for live broadcasting or e.g. A slide show presentation.

Video Printing

The UFG Frame Grabbers replace an outdated video printer. They are capable of storing video images from all kinds of video display screens for printing to an ordinary PC printer.



www.unigraf.fi

UNIGRAF OY Ruukintie 3, FI-02330 Espoo, Finland
 Tel +358 9 859 550, fax +358 9 802 6699

UNIGRAF-USA Tel +1 888 362 7960, fax +1 605 362 7961, www.unigraf-us.com

Please visit www.unigraf.fi for listing of Unigraf Worldwide Distribution