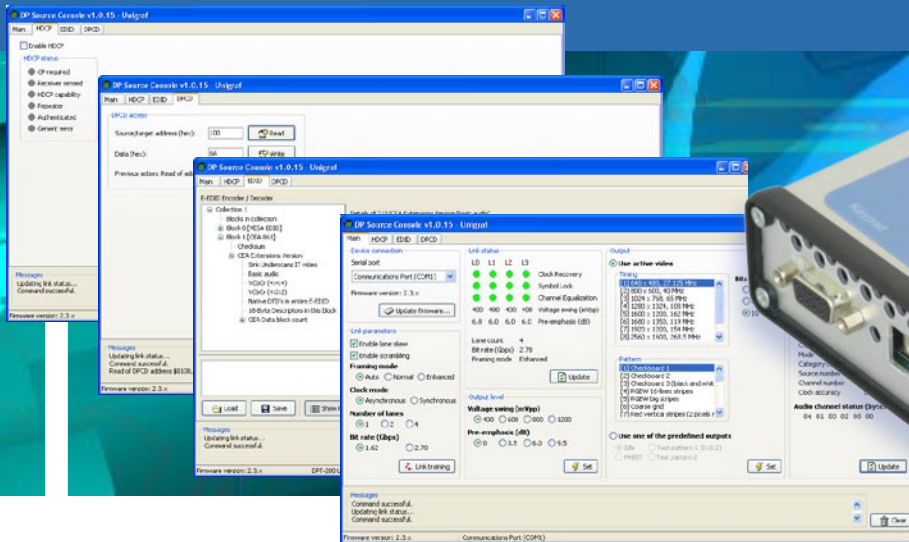


# DPT-200

compact sized DisplayPort™ source with Source Console



## Versatile Tool for DP Sink Testing

The DPT-200 is a full featured and easy to use DisplayPort™ source for development, debug and production line testing of DP controlled flat panel display modules, monitors and TV sets. The DPT-200 allows you to monitor all aspects of the DP interface like Link and HDCP status, sink EDID and DPCD. You can also manually set DPCD, Link Parameters, Output Level Timing and Pattern used. The Source Console GUI also includes an advanced EDID editor and programmer for changing the sink EDID information.

The DPT-200 allows you to easily perform tasks that are not possible with normal DP source devices. In addition to the Source Console GUI, you can use the Production Test Command set to interface DPT-200 to your automated production system.

## Compact Size

The DPT-200 is a USB controlled device. It has a very compact size and light weight. This makes it extremely usable in any environment from laboratory desktop to production rack or movable test cart.

### Features:

- Full featured DisplayPort™ source
- Manual and automatic link training
- Manually settable output levels
- Read and write EDID and DPCD
- True Color patterns
- Audio feed through
- Controlled via USB or keypad

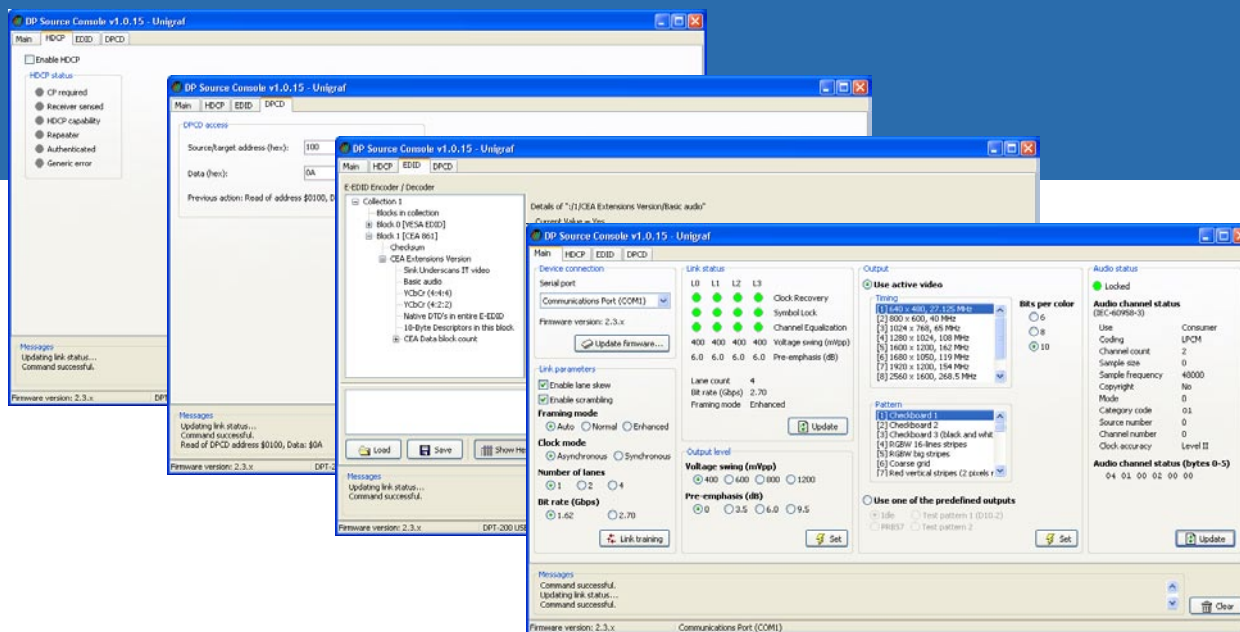
### Applications include:

- Development and debug
- Manufacturing testing
- Servicing



# DPT-200

compact sized DisplayPort™ source  
with Source Console



## Source Console

As a development and debug tool, the DPT-200 is permanently connected to a PC through its USB I/F and is operated from a GUI application. This application allows to

- Perform manual and automatic link training
- Output PHY patterns like PRBS7, D10.2, etc.
- Output proper video timings with one out of the built-in patterns
- Set output swing and pre-emphasis levels
- Read and write EDID and DPCD locations
- Report link training outcome and state of the DP link
- Start / stop HDCP authentication
- Report HDCP authentication outcome and state
- Audio feed through

## Production testing

As a production testing aid, the DPT-200 can execute one or more sequences of operations, selected by using the keypad.

- A sequence of user definable steps involving basic functionality (link training, video on/off, PRBS7 pattern)
- A (CTS) test out of a fixed set.

## Specifications

DisplayPort™	STMicro gm60028 transmitter Supports 1, 2 or 4 lane configurations, four levels of pre-emphasis and voltage swing, high and reduced bit rates
Deep Color	8 or 10 bit color depth, true color RGB or YCbCr 444 or YCbCr 422
Audio	Audio feed-through, optical S/PDIF input. Up to 2 LPCM channels at 192 kHz, 24-bits or multi-channel compressed (AC3, DTS, etc) compliant with IEC60958 / IEC61937
Test Patterns	Set of built-in test patterns. Timings up to 270 Mpix/s pixel rate
Power Supply	External AC/DC adapter included
Mechanical size	105 x 130 x 33 mm
Weight	0.28 kg w/o power supply
Control	USB interface Keypad (optional)

All specifications are subject to change

 **UNIGRAF** [www.unigraf.fi](http://www.unigraf.fi)

**UNIGRAF OY** Ruukintie 3, FI-02330 Espoo, Finland  
Phone +358 9 859 550, fax +358 9 802 6699

**UNIGRAF-USA** Phone +1 888 362 7960, fax +1 605 362 7961,  
[www.unigraf-us.com](http://www.unigraf-us.com)

Please visit [www.unigraf.fi](http://www.unigraf.fi) for listing of Unigraf Worldwide Distribution